

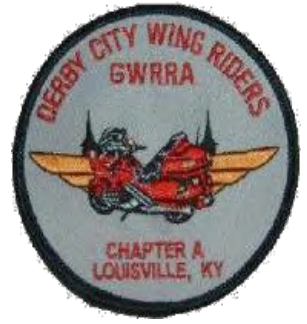


Derby City Wing Riders

GWRRRA

Kentucky District

"Friends for fun, Safety, and Knowledge"



Meet the Officers and Staff:



Louisville KY

Chapter Directors: **Ray and Angela Taylor**

Assistant Directors: **Tom and Marlene White**

Ride Coordinator: **Don Price**

Webmaster\Assistant Ride Coordinator: **Kent Risen**

Membership Enhancement Coordinator: **Dean Miller**

Treasurer: **Beverly Decker-Blunk**

Newsletter Editor: **Karen Risen**

Pin and Patch Coordinator: **Miles Finley Justice**

Shirt Coordinator: **Brenda Snook**

Couple of the Year: **Kent and Karen Risen**

Individual of the Year: **Miles Finley Justice**

Chapter A

April 2022



Director's Track

Well, here we are in April already. Wing World states that April is the time for reawakening both in nature as well as riding. I am certainly excited in the reawakening for many reasons. It will allow me to do what I love best at my age. I and my friend Don will embark on a trip from the Atlantic shore to the Pacific shore and back starting on April 23. Unfortunately, my riding partner who is my wife Angela and the love of my life is not able to join me on my quest. This will be quite different since I have never taken a long trip without her. I guess that I will be talking to her in the side car even though she will not be there. I have done that before when she was not there.

There comes a time in life when you do not know when you're riding time may be up. With this in mind, I have decided to do something that I have thought about for years. I have been told several times that I am crazy for attempting an adventure such as this at my age, but I believe that you are only as old as you feel, and I feel more than capable of such a trip.

I would recommend that everyone evaluate your life and by all means go out and do what you have always wanted to do before it is too late. Those who have never taken a trip on a Gold Wing motorcycle would be extremely surprised at the comfort and exhilaration of being out on the open road with the wind blowing across your body as though you are flying as a bird would be in its flight.

We at Chapter A have several trips planned and look forward to all of you in our Gold Wing community joining us for as many rides as possible. We also look forward to joining other chapters in their rides.

Remember that spring brings grass mowing, and I cannot remind you enough about grass on the road. I hope that all Ride Coordinators will mention this in their pre-ride safety briefings. I hope that the weather turns nice and stays that way so that we can get out there and leave all our worries behind. Drive safely and we will see you on the road soon.

Ray & Angela Taylor Chapter Directors

Assistant Chapter Directors Tom and Marlene White



Beyond the Local Chapter

If you have been reading any of our newsletters during the last year then you certainly must have realized a common theme throughout all of them, that theme being how much we at Chapter “A” love to ride our bikes. We like to ride a lot. We love to explore new-to-us country roads, visit interesting destinations and eat at mom-and-pop restaurants. The fun and fellowship we enjoy on these rides is memorable and the relationships we are building are long-lasting. While we are definitely a riding organization, riding is only a part of what and who we are.

During the winter months and when the weather is terrible just what is it that we do you may wonder? A good example was found in our April monthly Chapter “A” meeting. It was a cold,

wet and nasty day when we gathered together at our normal eating/meeting place. You would think that since it was in the low 40's and drizzling and we could not ride our bikes that the turnout would be rather dismal.... but quite the contrary. In addition to our normal regulars from Chapter "A" we also had numerous guests from other GWRRA Chapters around the state. In attendance was 5 from Lexington "C", 3 from Florence "G", 6 from Henderson "K" (plus a guest), and 3 from Elizabethtown "S". If the weather had been nicer the guest count would have been greater, I am sure! We in the GWRRA simply choose not to let the weather keep us from gathering together and having FUN. FUN is what the GWRRA and your local chapter is all about!

When you become a participant of the GWRRA, and not simply join, but become an active participant of your local chapter you are opening yourself up to a wonderful opportunity to make friends and develop lasting relationships with other people, not just within your local chapter but from all around the state, and even in the surrounding states. Just as we had visitors at our recent chapter meeting, we at Chapter "A" also visit the other chapters when we can for their meetings. By doing so, we have met and are becoming good friends with so many new people that without the GWRRA we never would have met. You can't help but to like so many of the folks you will meet. Some are young and some are older, some are like "Uncle Fester" and others will simply steal your heart as soon as you get to know them! If in the beginning you truly put a bit of effort into participating with your local chapter, we almost guarantee that the blessings you will receive will far outweigh the little effort you expend. Why is that? Because once you get to know the people of the GWRRA you will find that you look forward to being with such great people. Before you know it, these people will have become a part of your "Riding Family"!



Ride Coordinator Don Price

Communication is defined as the imparting or exchanging of information by speaking, writing, or using some other medium. For an opening statement this pretty much says it all; however, I believe I need to add that to communicate you need someone to listen and understand what you are trying to communicate. But are we doing a good job in

communicating with our members?

There have been some recent events I have attended along with communications within our

Chapter that have opened my eyes to some deficiencies with our current communication processes. When I attended the GWRRA 101 class in Florence, KY on March 26th, my first thought was that I've been a member of GWRRA for about 10 years what is this all-day class going to teach me that I don't already know? First off, I met members from other chapters I'd never met before who became new friends and reunited with members that I hadn't seen in a while, and it was good to catch up. I also learned some history about GWRRA that I wasn't aware of, and I was refamiliarized with our GWRRA mission statement.

After observing and being involved in communications between our Chapter members I was made aware that we, as a Chapter, don't have a new member packet to hand out to prospective new members. A new member packet would be a great form of communication at someone's very first visit that explains a little about our Chapter and about the GWRRA Organization. The mission statement along with important websites on where to find more information such as GWRRA.ORG and GWRRADOT.COM should also be included. Links for the GWRRA Kentucky District website and our own Chapter A website should be in the packet as well as information about our current Chapter Director, Ride Coordinator and Membership Enhancement Coordinator, and their contact information should potential new members have questions. When and where we meet, membership fees, other Chapter's meeting times and dates and how we plan our rides or examples of rides is all great information to let potential new members know what we are about. We need to show new members how GWRRA and our Chapter works while also showing them we are in this organization to have fun!

Another area of communication that I realized we could improve upon as a Chapter is how do we communicate to our members who couldn't make it to the Chapter meeting, the main place information is discussed?? Where do they find information about what we discussed, what future rides we are planning, and what are other chapters are doing or where they are riding in case we want to join in the fun?? Some other Chapters of GWRRA who have been around a lot longer time may have already worked this all out, but I see this as an opportunity for our Chapter to grow and COMMUNICATE better amongst ourselves as we figure these processes out together.

As your Ride Coordinator for Chapter A, I'm looking forward to the results we will establish to improve and increase our FUN FACTOR and communication as we grow.

Assistant Ride Coordinator Kent Risen



Well, it seemed that the riding season was upon us! But alas, Mother nature giveth and mother nature taketh away!

We should all take advantage of this last bit of winter and give our bikes a thorough look over. Does my oil need to be changed? Are my tires worn? Any loose pieces? Below is a nice list from Honda Parts Direct:



Motorcycle Pre-Ride Checklist

June 30, 2020 | Guide | By: Honda Parts Direct

Whether you're going for a short ride around town or you're embarking on a longer trip, it's important that you inspect your motorcycle before you depart. After all, you want to feel confident that everything is in working order so you can enjoy the ride. You don't want to be on the road when you discover an issue with your bike. Not sure where to begin? We've got you covered. Honda Parts Direct has created this guide, so you'll know what you should check before riding your motorcycle. Read on for more. If you need [parts](#) or [accessories](#) for your bike, be sure to check out our online store. We proudly serve Houston, Dallas, and all of Texas. We also offer international shipping.



Tires

Start by examining your tires. Most of this will be preventative, but it's an important step because it helps you spot issues before they become problematic. You don't want to find yourself stranded on the side of the road due to an issue that could have been prevented. Confirm that your tires are properly inflated.

While this is a part of preventative care, it's also essential for better weight distribution. As you may know, proper weight distribution can affect acceleration and braking. Use a tire pressure gauge to check the tires. Refer to your owner's manual for the recommended psi level. Always check the tire pressure first thing in the morning when the tires are cold so you get an accurate reading.

Fluid Levels

Another critical step in your pre-ride inspection is your motorcycle's fluid levels. Make sure you have the right amount of fluid and that it's the correct color and consistency. Check the engine oil with a dipstick. Insert it, remove it, wipe it off, then reinsert it again. Take a look at the dipstick and check if the oil falls on the right spot, which indicates there is an adequate amount of fluid. The oil should be a golden color, not dark brown or black.

As far as the brake fluid is concerned, you'll want to see if there is enough in the reservoir. You'll find that some motorcycles have both a front and rear reservoir for brake fluid. Remember to check both of them if this applies to your bike.

Top off your fuel tank before each motorcycle ride. You'll be fine if you have more than enough fuel. You don't know where the road is going to take you, especially if you're feeling adventurous. It's better to have more than enough fuel than to run out unexpectedly.



Clutch, Throttle, and Brakes

Take your motorcycle for a quick spin around the neighborhood so you can test your clutch, throttle, and brakes. You don't want to wait until you're on the highway to see if everything is functioning correctly. When testing the clutch, be on alert for abnormal grinding or roughness. Confirm that the throttle is closing fully and that your bike doesn't idle when it shouldn't. Your brakes should not be grinding, vibrating, or squealing. Any of these issues could indicate a larger issue that needs to be addressed immediately.

Lights

Finally, you'll need to make sure that your lights are working. If you need a replacement, this is something you'll have to take care of before you ride your motorcycle. It's both dangerous and illegal to ride your bike without properly functioning lights. Check your headlights, brake lights, and turn signals. Aside from functionality, you also need to confirm that they're bright and visible. Check the lenses and wipe away any dirt or grime.

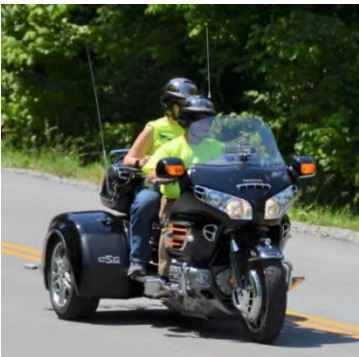
Now that you know what you should check before riding your motorcycle, you're officially ready to gear up and hit the road. On the other hand, if you've come across an issue that needs addressing, make sure you visit our online store and browse our Honda® parts for sale. You can visit us in Palestine, Texas, to pick up your order to avoid shipping costs. We proudly serve all of Texas and offer international shipping. If you need help finding parts or accessories, don't hesitate to contact us. We look forward to assisting you!

Thanks, Kent

The Purpose of the Membership Enhancement Program is to ensure that GWRRA members at every level in the organization have an enjoyable experience while participating in the many opportunities GWRRA provides. To make a long story short... we want you to have FUN!



Membership Enhancement Dean Miller



Well, the trike has been gone over and has had all the appropriate preliminary riding season items checked off the list and is ready to head out on the road. The temperature is a bit on the cool side this morning, but the sun is shining bright, and it looks like it's going to be a beautiful day for riding. Sadly, though for me today is a workday and although I will admit that I am just a little bummed out about it I do

have a plan B. I read somewhere that one way to beat the winter riding blues is to start planning some summer rides. So, with that in mind I'm going to take this time and plan a camping trip for Lora and myself. This will be a new adventure for us because it will consist of pulling the little motorcycle trailer and sleeping in a tent instead of our usual glamping in the "tramper". Not exactly sure how it will go and I'm sure there's bound to be some hiccups along the way, but one thing is for certain...we will make it fun! So, if anyone who's been there and done that has some tips or suggestions feel free to pass them on. TIA

District Membership Enhancement



**Dave and Roxie
Wilkinson**

District MEPC

The weekend of Saturday, March 26th and Sunday, the 27th started, for us, with the GWRRA 101 class that was presented all day Saturday. It was well attended by members and leaders from six chapters and by district team members. The class was chock full of great information for chapter life and we were taught how to find that information on the GWRRA website.

Sunday was an all day training event about ITCP. It was presented for those who would like to become presenters of GWRRA University classes.

Both GWRRA 101 and ITCP were presented by Laurie Thomas, Director of Training, and Susan Huttman, University Instructor Trainer. Both come from GWRRA National. They are great at what they do and they made it fun, too!

Those who attended the ITCP class are now certified as trainers and could be called upon to give GWRRA University presentations at District events like our Kentucky Blast or at another state's District event if they are invited.

Thanks to our own Kentucky District members there is now less of a shortage of trainers for GWRRA University classes!!

We'll see y'all in class!

Chapter Visits:



March 20th Chapter A made a trip on bikes to Henderson Ky to visit Chapter K. We got there with COY Mascot in hand to give other couples a chance to spend time with little Smokey. **AND** we left with a piece of wood shaped like our beautiful state!!



K-Henderson



April 3rd the weather cooperated again so Chapter A was able to ride again and took the long way down to visit Chapter S in Elizabethtown, Ky. It was a nice day and there were a lot of bikes in the parking lot for Chapter S's meeting. AND we were able to get the COY mascot back!! That's right Smokey is coming back in the Ville!!



Chapter A Past Rides:



S-
Elizabethtown



From the Editor's desk Karen Risen



April is finally here, and I am looking forward to warm riding weather. Thanks to all the great Newsletter articles everyone is sending please keep up the good work. I was able to attend the GWRRA101 workshop in March and learned so much about GWRRA including some things about Newsletters. If there is anything else, you want to see in your Newsletter please let me know!! Thanks!

KY District Newsletter: <http://www.gwrraky.com/newsletters-page/>

Future Rides

You can find more information for future rides on the Kentucky District's Website:

<http://www.gwrraky.com> or the Kentucky District's Facebook page: **GWRRA of Kentucky Member's Page** and on the GWRRA National website: <http://www.gwra.org>.

Kentucky District Ride-In June 3rd and 4th 2022. Hosted by Chapter A in Bardstown Ky!! If you want to take full advantage of all the rides you will need to arrive on the evening of Thursday June 2nd. Rides are happening all day Friday and Saturday. Check the Kentucky District website for full details including a Ride Booklet with all the rides, lunch spots, and destinations and the Ride-In Registration Form. Get your registration form in early which includes a list of all the rides you will need to select in order to get the ones you want. Each ride is limited to 20 participants only. Hope to see everyone there!!!

Kentucky Blast District Rally August 25th-27th 2022

The Kentucky Blast will be held this year at the Showroom in Danville, Ky. The theme is 'Hawaia Doin' with a Luau Friday night and an Advanced Rider Course, Trike Course, and a Medic First Aid course all held on Sunday August 28th. Please see the Kentucky District page for more information on Hotels and Registration for this event. Hope to see everyone there in August!!



June 28-July 2, 2022, WingDing Shreveport, LA

June 28 – July 2, 2022 | Shreveport Convention Center, 400 Caddo St. Shreveport, LA 71101

Wing Ding is the ultimate Honda Gold Wing & Touring Bike convention! Hosted by GWRRA at different locations across the United States every year, the rides to Wing Ding as well as unique atmospheres are unforgettable. Come join us for a motorcycle convention unlike any other, where you can enjoy the company of friends with live entertainment in a beautiful location, learn more about motorcycle safety, discover all the latest products for your bike, and even test drive a new one.



REGISTER TODAY

VISIT 43.WING-DING.ORG OR CALL 800-843-9460

Kentucky District Events:



**Rick and Leah
Cridlin**

Kentucky District
Directors

It was a busy fun filled weekend for GWRRA events!! The GWRRA 101 Workshop was held March 26, 2022, at the Boone County Main Library in Burlington, Ky. This was a one-day workshop with 9 sections that focused on the functions, structures, and polices of GWRRA. Lots of great friends, fun and knowledge!!



*And of course, we all
met for
Dinner after the class!!*

The GWRRA University Instructor Training and Certification Workshop
was held on Sunday March 27, 2022. Thanks to Jeannie McKenzie, our
KY District University Instructor, and the KY District for making this
special opportunity possible. Special thanks to the University Director
and Trainer Lorrie Thomas and Susan Huttman, Director of Rider
Education and Trainer for all their hard work and awesome instruction.
We all learned so much!!

University Coordinators



Jeannie & Buddy
McKenzie



Director of Ride Education



Susan and George Huttman

director-re@gwrra.org



Director of University of GWRRA



Lorrie Thomas

lorriemthomas@aol.com

Congratulations to our new GWRRA KY University Trainers!!!!



Watch Chapter A Derby City Wing Rider's <https://chaptera.org> for weekly dinner, movie, and upcoming weekend rides!!



Chapter A Monthly Meet!!

***2nd Saturday of the Month Roosters 10430 Shelbyville Rd**
Louisville, KY 40223 **11am Meeting begins at Noon.***

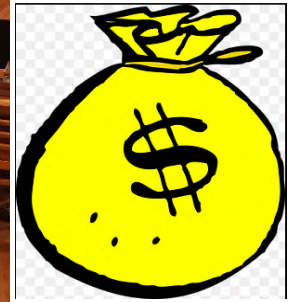
Chapter A met Saturday April 9th. We had lots in attendance (C, G, S, and K) due to having the Traveling Plaque and the COY Mascot. A good time was had by all!!!



***Chapter C got the Mascot and**
Chapter G got the Plaque...*



Chip Game Winner: *Mike VanHoose from Chapter C had the winning ticket but did not draw the winning marble. \$568 up for grabs next month!!*



50/50 Winners:

1st Place Winner: Ray Taylor won \$30

2nd Place Winner: Mike VanHoose \$20

3rd Place Winner: Roger Early \$18

(Thanks to all who played!)



Birthdays:

Connie Falone April 15
Dr David Dow April 13

Anniversaries:





District Rider Education Director Rider Education Report

Signs, signs, everywhere are signs! When I ride, this catchy tune often pops in my head. While you may disagree with the message in the song written by Les Emmerson of the Five Man Electrical Band, it is true there are many different types of signs posted along our highways, all designed to provide information about traffic and highway conditions ahead. In the early days of motor vehicles, there were no standards, and no road markings either. In 1911, the first center line was painted on a road in Cleveland. In 1915, the first STOP sign was planted in Detroit, followed five years later by the first three color traffic light, also in Detroit.

Today we have the Manual on Uniform Traffic Control Devices, or MUTCD, that sets a minimum standard for all highway signs so that everyone can better understand the information they offer. First issued on November 7, 1935, this manual defines the meaning behind each shape and color of the signs in use. And it is reviewed and amended as needed at regular intervals.

The color of roadway signs is an important indicator of the information they contain. Each color is also defined with a pantone number for uniformity. The use of red (187) on signs is limited to stop, yield, and actions that are prohibited like NO PARKING. A white background indicates a regulatory sign, such as speed limit signs. Red and white signs indicate laws applicable to that section of highway. Yellow (116) conveys a general warning message, such as signs posted to indicate curvy roads or pavement that may be slippery when wet. Green (342) shows permitted traffic movements or directional guidance. These are commonly seen along our interstate highways indicating exits and travel lane details. Fluorescent yellow/green (382) indicates pedestrian crossings and school zones. Orange (152) is used for warning and guidance in construction zones, and like regulatory signs, indicate laws that are required to be observed. Coral (198), a pink color, is used for incident management signs. Blue (294) indicates road user services like rest areas and handicapped parking, tourist information, and evacuation routes. And brown

(469) is for guidance to sites of public recreation or cultural interest like parks and recreation areas.

The shape of a sign can also alert roadway users to the type of information displayed on a sign. Traffic regulations are conveyed in rectangular signs that are taller than they are wide, or square. Other shapes used for regulatory signs are octagons for stop and inverted triangles for yield. Diamond-shaped signs signify warnings. Rectangular signs that are wider than they are tall provide guidance information. Pentagons indicate school zones, and circular signs warn of railroad crossings

Richard Artmayer
KY District Educator



KY District Contacts

District Directors	Rick and Leah Cridlin	KYDistrictGWRRRA@gmail.com
Assistant District Directors	Dan and Rita Bondurant	
District Educator	Rick Artmayer	ky.de.educator@gmail.com
District MEPC	Dave and Roxie Wilkinson	mepc@gwrraky.com
2020 Couple of the Year	Dave and Roxie Wilkinson	coy@gwrraky.com
District Treasurer	Jerry and Luanne Williams	treasurer@gwrraky.com
District Ride Coordinators	Don and Janet Price	ride_coordinator@gwrraky.com
District Vendor Coordinators	Ray and Kathy Conrad	rconrad@wkybb.net
District Webmaster	Roger Early	webmaster@gwrraky.com
District Pins & Patches	John Keiter	.
District Newsletter	Donita Nardi	newsletter_editor@gwrraky.com



Chapter A's Couple of the Year:

Kent and Karen Risen

Hello everyone,

Kent and I were able to attend both the GWRRA 101 class and the University Instructor training class in March. We enjoyed both classes and are proud to announce we are not only Chapter A's Couple of the Year but also University Instructors!! We were both amazed at how much knowledge and training is offered as part of the GWRRA membership. We look forward to meeting new friends as we educate!!!



**Allen and Lisa
Merritt**

District COY Coordinators

District COY Coordinators

Hey everyone! We see where the Chapter Couples are chasing the mascot. They are building their resumes. While doing this, make sure your membership is updated. Make sure your Chapter Director fills in their part of resume and they sign it. If you need any help with your resumes let us know. We will be calling every chapter couple next month to talk about resumes and the COY selection process. Stay safe.

KY District Couple Year Coordinators, Allen & Lisa Merritt. Allen 270-647 0205, Lisa 270-647-0624.

WIN THE GRILL!!

**Support the KY District Couple of the Year Program,
win a Blackstone 22" Portable Griddle
just \$2.00 each ticket!!**



Drawing at the closing ceremony of the 2022 KY BLAST
Need not be present to win

All Couples have been given a packet of tickets to sell
More tickets are available from the District Directors



Smokey Report:

The Kentucky COY Mascot

Chapter A got to take Smokey home at Chapter S's meeting on March 13th. He has traveled to the Louisville Zoo where he felt right at home and dressed up fancy style for St Patrick's Day fun.....





March 20th Smokey got to go back and spend time with Chapter K's COY Greg and Marilyn. Smokey was once again up for grabs at Chapter S's meeting on Sunday April 3rd and Chapter A got him back!! Stay tuned for the upcoming Smokey report on what adventures will be coming up next.....

Chapter A's Individual of the Year:

Miles Finley Justice

Happy Spring, Chapter A! Although the weather for the upcoming weekend would indicate otherwise, riding season is here at last. Within a couple of weeks, we will be able to get out there and once again enjoy the open road together as a Chapter Family. I do not know about the rest of you, but I can hardly wait!



It sounds as though the first overnight trip scheduled will be the last weekend in April. A couple of folks will be headed West to California (lucky retired guys!), a few will be attending Spring Fling in Eastern TN, while others will be off on a different adventure. Here's hoping each group has a fantastic journey. It will be great fun to debrief and share stories from the road after everyone returns. Wishing you all many fun and safe miles this month!



Pins and Patches Miles Finley Justice



I am happy to provide an update regarding the chapter pins and patches inventory. Thanks to our Pins and Patch District Coordinator John Keiter, we have a new supply of Visitation Pins. These are the round pins on which to display the various chapter hanger bars we collect when visiting other chapters. John was able to provide 15 pins at a cost of \$3 each. These will be available at all Chapter A meetings. Additionally, I have ordered Chapter A hanger bars. Unfortunately, these pins will take another couple of weeks to receive. Since the minimum order was 50 pieces, we should have plenty for visitors and members alike. The cost of the new pins has increased since the last time they were purchased and will now sell for \$3 each. Finally, the GWRRA website is back in operation, so patches can again be ordered from the store. The prices for these are the same whether each member orders their own or I order in bulk for all those who need patches. Please get with me at any Chapter gathering, by email (legaleaglejustice5@gmail.com) or text/call (859.699.3754) anytime if you would like for me to order for you. Hope to see you on the road!



GARAGE TALK:

MY MIRRORS ARE FINE, RIGHT?

By George Woodside



Most likely, no, your mirrors are not fine. After looking at the mirror settings of several Wings at a recent meeting, I noticed that most riders have their mirrors adjusted so that both side mirrors have a predominant view of the rider's elbows, and the lane behind the bike. That minimizes the coverage of the adjacent lanes, allowing vehicles to hide in blind spots. It also wastes a lot of mirror coverage by overlapping the view of the two mirrors covering the same area. By setting your mirrors properly, you can minimize the amount of overlap, and maximize

the amount of coverage.

We should all be doing a head check before changing lanes, but knowing ahead of time that a vehicle is there is much safer.

Try setting your mirrors this way. Park your bike on a side street about 15–20 feet in front of a parked vehicle. Place yourself in your normal riding position and check the view in your left mirror. Keep adjusting your left mirror out until you can see just your hand in the mirror and about half of the car behind you.

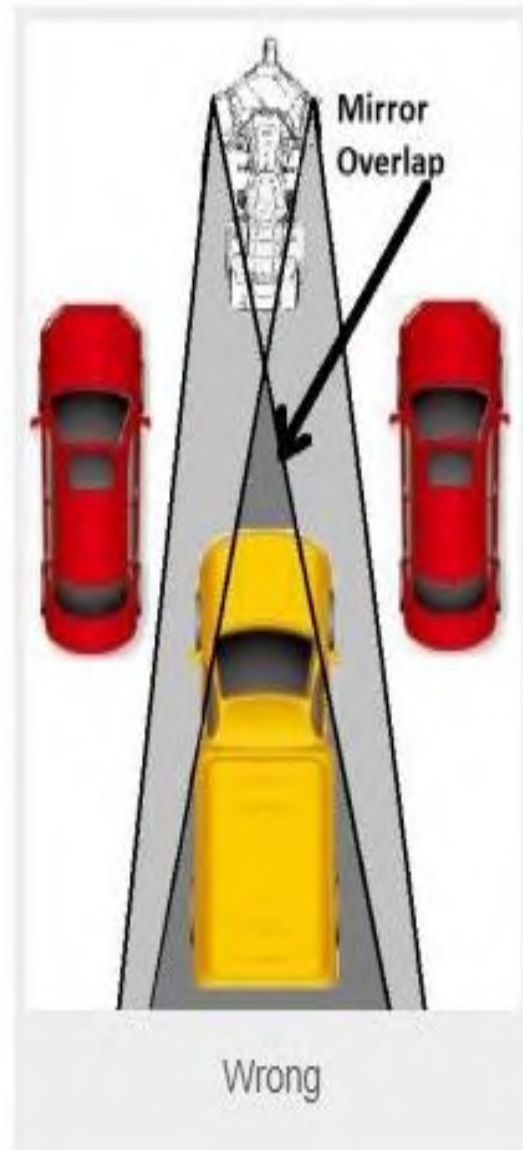
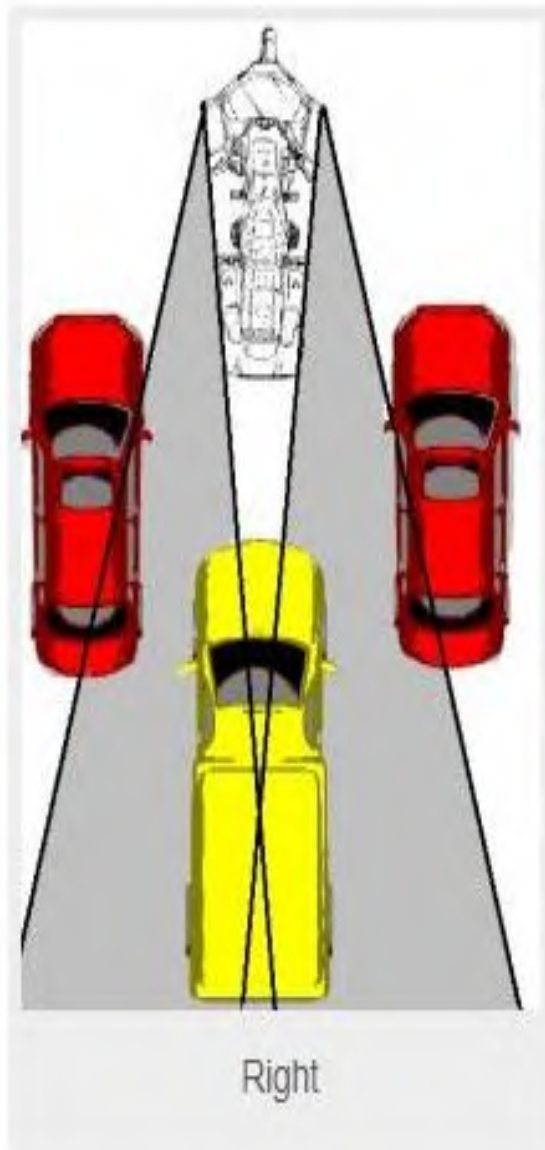
Then do the same with your right mirror.

Now, take a ride in traffic and see if you don't have much better visibility of traffic in the adjacent lanes. Vehicles that were previously in your blind spots will be clearly visible. A vehicle in the lane behind you will be visible in both mirrors.

This approach can also be used in four-wheelers. Start by adjusting your inside mirror to display the full view of the lane behind you. Now note the item (a tree, bush, sign or whatever) at the very left edge of the view in your rearview mirror. Then adjust your left outside mirror so that same item is at the right edge of the outside mirror image. This gives you a much wider range of view using those two mirrors.

Repeat the process in your right outside mirror and you'll have the maximum coverage your mirrors can provide.

But, still remember to make that head check



Upcoming GWRRA

Events:

WHAT'S HAPPENING
NEXT In OHIO ??????



2022

February 11-12

Cabin Fever

Theme: Games Shows

Salt Fork State Lodge

Registration form and

Daily activity program

Attached.

April Xxx

Spring Officers Meeting

Location: TBA

June 16-18

Buckeye Rally

Theme: Christmas in June

Greene County Fairgrounds

Xenia, Ohio

HOST HOTEL

Ramsey Hotel and Convention Center

3230 Parkway, Pigeon Forge TN 37863

For Reservations Call

865-428-2700 or myramseyhotel.com

Rate is \$150 / night for two Queen, or one King bed

includes Full Buffet Breakfast for all Guests.

Be sure to mention GWRRA or Spring Fling to get the special rate. Special rate and hold on rooms expire on March 28,

2022.

The Ramsey Hotel & Convention Center

- 208 Interior corridor updated guest rooms with plenty of common areas.
- All extra clean guest rooms feature new pillow top mattresses, all white duvets, linens and bath towels, large LCD 42" TVs with cable, one gigabyte of fast glass fiber Wi-Fi, Keurig coffee makers, mini-fridge, microwaves, hair dryers and Bath & Body Works bath amenities.
- Huge indoor 24-hour waterfall pool, hot tub, fire pit patio with nightly giant movie screen with free hot fresh popcorn
- Free wireless, high speed internet throughout hotel
- 24-hour complimentary fitness and business centers
- Free 24-hour coffees, teas, and hot chocolate
- 24-hour guest laundry
- City of Pigeon Forge Fun Time Trolley Route with onsite pickup
- Complimentary hot breakfast buffet with eggs, sausage, biscuits and gravy, fried potatoes, grits, oatmeal, yogurt, bagels, English muffins, assorted muffins, cereals, fruits, milks, juices, hot chocolate, tea, and coffee
- Boutique 4-star hotel with 3-star prices
- Only 10 minutes to major attractions like Dollywood, Dolly Parton's Stampede, The Island in Pigeon Forge, The Old Mill Historic District, LeConte Center, and the Ripken Experience.



39th Annual

Tennessee District

Spring Fling

April 28-30, 2022, Pigeon Forge, TN

**Tennessee Spring Fling 2022
Pigeon Forge TN**



TV Shows Of The 70's

Upcoming GWRRA Training Events:

APR 2022



DATE/TIME	EVENT
04/16/2022 9:00 am - 11:00 am	Missouri District ~ Team Riding Seminar Big Mama's Cafe, Columbia Missouri
04/16/2022 10:15 am - 1:00 pm	Iowa District ~ Team Riding and Running Mountains, Hills and Curves Noelridge Christian Church, Cedar Rapids Iowa
04/19/2022 7:00 pm - 9:00 pm	Canadian Atlantic~ Co-Rider (online class)
04/23/2022 10:00 am - 4:00 pm	Michigan District~ Training Day Clare VFW, Clare Michigan
04/23/2022 1:00 pm - 2:30 pm	Colorado District ~ Co-Rider Seminar The First Christian Church, Grand Junction Colorado
04/23/2022 2:30 pm - 4:00 pm	Colorado District ~ Motorcycle Crash Scene Response The First Christian Church, Grand Junction Colorado
04/24/2022 7:00 pm - 9:00 pm	Canadian Atlantic District ~ Cha-Cha-Cha Change Managing Change
04/30/2022 9:30 am - 10:30 am	North Carolina District~ Co-Rider Seminar Mebane Art Center, Mebane North Carolina
04/30/2022 10:30 am - 11:30 am	North Carolina District ~ Retention Mebane Art Center, Mebane North Carolina

SEP 2022

DATE/TIME	EVENT
09/03/2022 8:00 am - 5:00 pm	Oklahoma District ~ITCP Instructor Training Cattle Country Lodge, Stroud Oklahoma

¹³ KY District Newsletter: <http://www.gwrraky.com/newsletters-page/>

GWRRA's National Newsletter: <http://www.gwra.org/enewsletters.html>



GWRRRA



Membership Enhancement

Here's The Scoop:



FEBURARY 2022

FUN IDEAS FROM OUR GWRRRA MEMBERS

VIRGINIA DISTRICT

PHOTO MEMORIES SCAVENGER HUNT

Since we can't get together as a group and have new riding adventures, I thought it would be fun to look back at some of our past rides/events. So I came up with a "Let's Look Back..." Quarantine Quiz and Scavenger Hunt. For this, I used photos from our Chapter C Facebook group page to represent the answers to 25 different questions/riddles/clues. I didn't originally intend for it to be that many, but once I got started, I kept finding fun photos that just had to be used. Facebook Live was a great tool to generate excitement about the event and the announcement of the winner. We also used it to give "How-to" instructions as some members are a little computer/tablet challenged. Here's how it worked. You can schedule posts on Facebook by date/time. Major score! I was able to write the 25 posts and schedule them to appear every 5 minutes the night of the game. This allowed me to enjoy seeing our members try to answer each question. Players had 3.5 hours to locate photos that best represented the answers. They were to copy the photo, then paste it as a comment on the appropriate question post. We really enjoyed seeing their creativity as they came up with photos we didn't even think of when we wrote the question! It was a great way to reminisce and everyone had a good time as they searched. The winner (congrats to Brent Cook!) received a Coronavirus Quarantine Care Package which included little games, puzzles, candy, etc. Of course, a roll of toilet paper was included in the care package! Nothing expensive – just think fun and Dollar Store.

Example question: "This town was founded in 1858."

ANSWER: Ashland, VA.

MISSISSIPPI DISTRICT CHAPTER MS-Y

Mississippi 6-Point Challenge

This challenge is all about having a FUN time while touring the great state of Mississippi!

Objective: Ride to each location and take a picture of your motorcycle (2 or 3 wheels) next to each of the 6 unique points of Mississippi (no specific order).

If a co-rider is participating, the co-rider is required to be in all 6 pictures too.

You have until December 31, 2022 to complete this challenge. Once completed, email all 6 pictures to: msy6pc@gmail.com

Mail a \$25.00 certificate/patch fee (per person) check payable to "GWRRA MS-Y". Note: Printed pictures may be included in the mail with payment, if so desired.

Visit each point separately throughout the year or make a weekend trip and visit all 6! Ride alone, with some friends, or as a Chapter

ILLINOIS DISTRICT

2022 Fun Run Announced

The 2022 Fun Run is Historical Markers.

I have asked that all chapters send 5 locations that are in the area of their chapter. If your chapter draws riders from 5 counties, try to find one from each county so they are not all in the same place. All of these markers do not have pictures on them.

The web site that is helpful is List of National Historic Landmarks in Illinois.

Please provide the address or GPS Coordinates and I will add them to the list. The 5 locations should be sent to me at wngldr98@yahoo.com by the end of February.

For safety reasons we ask that each landmark be in such a place with a pull off or at least a safe place to for the picture

.As in prior years, the fun run goes from April 1st to October 31, 2022. a picture should be uploaded to the Illinois District Webpage

Thank you for all the Districts and Chapters helping to make this Newsletter possible. We want to apologize for the lateness this month. Hopefully the Fun Ideas can be helpful in bringing everyone back together.

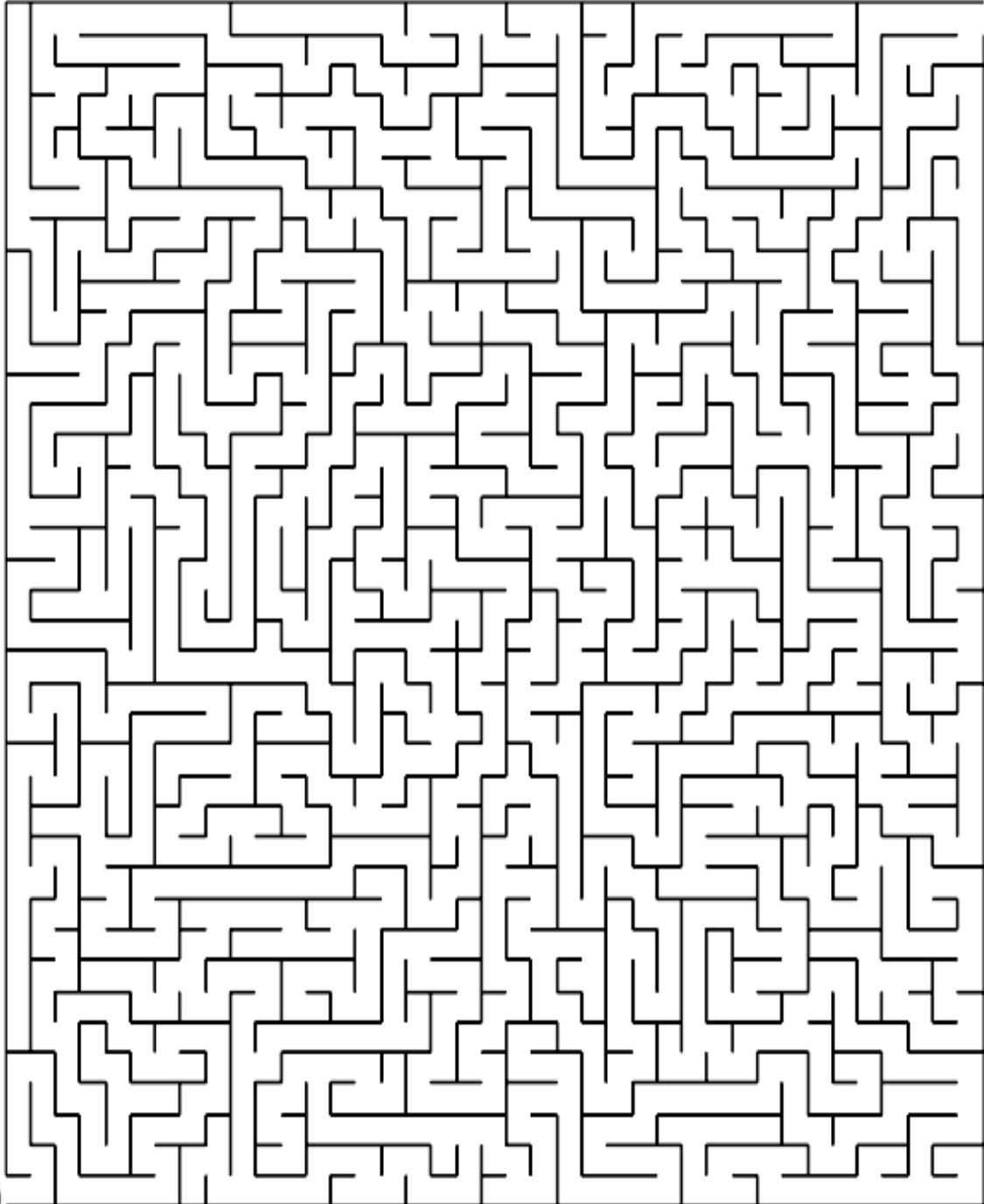
Chapter A would like to express its deepest sympathy to the family of Bruce Jump our fellow Goldwing rider, friend and GWRRA family member. We were deeply saddened to hear of his passing. Bruce joined GWRRA in May of 2003. He was a kind man who shared our love for motorcycle riding and served Chapter A for several years. He will be greatly missed by all.



April's Puzzle Fun "Destination Ice Cream"

Don't forget to bring this completed puzzle to May's meeting to exchange it for an extra door prize ticket!

Follow the twisties to arrive at the ice cream cone



Get on the Level

GWRRA Level System

Basically there are four levels:

1. Safety by Commitment
2. Safety by Education
3. Safety by Preparedness
4. Safety by Enhanced Commitment and Preparedness

Gold Wing Road Riders Association

Rider Education Levels Program

"THE BUILDING BLOCKS OF RIDER EDUCATION"

Each level requires that you are a member of the GWRRA and you have completed the previous level. The rider and co-rider requirements for each level are as follows:

Level 1: Safety By Commitment

Rider and Co-Rider requirements:

- The expressed commitment of the Rider or Co-Rider to strive for and practice safe riding.

Level 2: Safety By Education

Rider requirements:

- Have 5,000 safe miles.
- Have a current motorcycle license.
- Have completed an approved on-bike Rider course within the past three years.

Co-Rider requirements:

- Have 5,000 safe miles.
- Have completed an approved Two-Up Rider course or GWRRA Co-Rider seminar within the past three years.

Level 3: Safety By Preparedness

Rider requirements:

- Completed a formal approved on-bike Rider Course within the past three years.
- Maintain current First Aid, CPR **or** MEDIC First Aid certifications.
- Carry a First Aid kit on the motorcycle.

Co-Rider requirements:

- Completed an approved Two-Up Rider course or GWRRA Co-Rider seminar within the past three years (a sanctioned PLP is not allowed to be used for this Level).
- Maintain current First Aid **or** CPR **or** MEDIC First Aid certifications.

Level 4: Safety By Commitment and Preparedness

Rider requirements:

- Have been current in Level III for at least one full year.
- Have ridden a minimum of 25,000 safe miles.
- Be current in both First Aid **and** CPR certifications.
- Wear proper riding apparel at all times while riding.
 - *Proper riding apparel, a.k.a.: proper riding "gear" will include, at a minimum, a DOT (FMVSS 218)/Snell (M2010) / ECE 22.05 approved helmet (approved standard applicable to the local area), eye protection, long sleeved jacket/shirt (no "riding pull on/off sleeves"), long legged sturdy pants, full fingered gloves and over the ankle footwear. Some have coined the acronym ATGATT standing for All the Gear, All the Time.*

Co-Rider requirements:

- Have been current in Level III for at least one full year.
- Have ridden a minimum of 25,000 safe miles.
- Be current in both First Aid **and** CPR certifications.
- Wear proper riding apparel at all times while riding (see definition in the Rider section above).

GWRRRA VISION



Gold Wing Road Riders Association [GWRRRA] is recognized as the world's largest single-marquee for safety, technical, educational and social organization for riders of touring motorcycles.

GWRRRA MISSION

Dedicated to our Motto; Friends for Fun, Safety and Knowledge, GWRRRA Members enjoy the freedom of belonging to a not-for-profit, non-religious and non-political organization.

GWRRRA VALUES

- **Friends** - GWRRRA Members are men and women from all walks of life with varied interests and backgrounds. We have Gold Wing and other touring motorcycle riders of all age groups. Some ride solo and many ride with small and large groups! New Members join GWRRRA especially for the technical information we share; some of our Members join for the enjoyment of riding with friends and also meeting new friends. Find your future riding friends with your [Region Map](#).
- **Fun** - As a family organization, GWRRRA has certain fun groups to include restaurant, picnic and campout runs. We also have GWRRRA groups to include charities, parades, and small or large events across the country. GWRRRA Members can participate in live or video seminars through [Rider Education Programs](#).
- **Safety** - We strive for improvement through GWRRRA safety workshops. We will share technical expertise, news and tips about riding, maintenance and the best touring routes in the world. [Safety is for Life](#) on our GWRRRA Rider Education Programs page.
- **Knowledge** - While generalization about a group of individuals as large as today's GWRRRA is difficult, GWRRRA Members are likely to be independent thinkers, fun-loving, generous, adventuresome, cooperative and unfazed by the natural challenges of riding in the rain, temperature extremes or highway uncertainties. Many Members have completed CPR and first aid training, making them the best-prepared motorcycle riders on the world's highways! Find " CPR and First Aid Training " on our GWRRRA [Medic First Aid International® Programs](#).

WHY BELONG TO GWRRRA?

There are many benefits to becoming a GWRRRA Member. As a Member you will enjoy camaraderie and fellowship while enjoying the comfort of belonging to the largest family of Gold Wing/F6B and other touring motorcycle owners. We like to share our pleasure in the freedom of riding motorcycles with others like ourselves. Our Members strive for improvement by attending GWRRRA live, video and webinar safety workshops. We offer an emergency towing and roadside assistance program called [Rescue Plus](#). This is a benefit that ensures peace of mind, day or night. Among our 60,000 + skilled and dedicated Members can find the answer to almost any question regarding the Gold Wing! Your special Membership Card signifies your membership, along with many other benefits such as; discounts at touring motorcycle dealerships, designated hotels, campgrounds and travel agencies. As a Member, whenever you need help traveling, our [Gold Book Directory](#) connects you with your nearest friends, worldwide. Our *most important benefit* is sharing how to safely enjoy motorcycling in more ways than you thought possible. Belong to GWRRRA!

GWRRA's National Newsletter:
<http://www.gwra.org/enewsletters.html>



GWRRA National Contacts

TEAM GWRRA

Jere & Sherry Goodman
Director of GWRRA

Alessandro & Mariarosa
 Boveri, *Director Overseas*

Kevin Bramhoff
Director's Assistant

Dan & Mary Costello
*Director of Membership
 Enhancement*

James & Freida Clayson
*Director of Motorist
 Awareness*

Randall & Janet Drake
Director of Finance

Susan & George Huttman
Director of Rider Education

John & Shawn Irons
Director's Assistant

Frank & Sharon Jackson
Director's Assistant

Bob & Nancy Shrader
Director's Assistant

Lorrie Thomas
University Director

Tom & Renee Wasluck
Director's Assistant

Name	Position	Email
Jere and Sherry Goodman	Directors of GWRRA	JereGood@aol.com
Bob and Nan Shrader	Director's Assistant	floridadd@msn.com
Tom and Renee Wasluck	Director's Assistant	tom.renee11@gmail.com
John & Shawn Irons	Director's Assistant	ironsline3414@gmail.com
Frank & Sharon Jackson	Director's Assistant	frankj64155@yahoo.com
Lorrie Thomas and Dan Clark	Director of the University	lorriemthomas@aol.com
Dan and Mary Costello	Directors of Membership Enhancement	mep.director.gwrra@gmail.com
James & Freida Clayson	Directors of Motorist Awareness	james.clayson@gmail.com
Randall and Janet Drake	Director of Finance	financedirector@gwrra.org
Susan & George Huttman	Directors of Rider Ed	director-re@gwrra.org
Allesandro Boveri & Mariarosa Bruzzone	Directors Overseas	alboveri@gmail.com

***Thanks to anyone and everyone
 who took the time to submit for the
 Newsletter!!***

A BIG
 thank
 you




Area Chapter meetings in the Bluegrass State

Chapter A



Louisville KY
40223

2nd Saturday of the month @ Roosters, 10430 Shelbyville Rd.

11:00am Lunch. Meeting begins at Noon.

www.chaptera.org

Chapter C



Lexington KY
40509

3rd Saturday of the month @ Roosters, 2640 Richmond Rd.

11:00am Lunch. Meeting begins at Noon.

www.kybluegrasswings.org

Chapter G



Florence KY
41042

1st Tuesday of the month @ American Legion Post 4, 8385 US

Hwy42. 6:00pm Dinner. Meeting begins 7:00pm.

www.chapterg.org

Chapter H



Shelbyville KY
40065

1st Friday of the month @ UK Extension Shelby County Office,

1117 Frankfort Rd. Meeting begins 7pm, dinner follows.

Chapter K



Henderson KY
42420

3rd Sunday of the Month @ Golden Corral 1320 N Green St

Lunch at Noon. Meeting begins 1:00pm. **CENTRAL TIME**

Chapter S



Elizabethtown KY
42701

1st Sunday of the month @ Shoney's, 1046 Executive Dr

4:00pm Dinner. Meeting begins 5:00pm.

Chapter T



Paintsville KY

3rd Saturday of the month Giovanni's pizza 261 Court St

Eat at 5pm. Meeting begins 6:00pm. 41240

Chapter Y



Mayfield KY
42066

1st Thursday of the month @ Majestic Family Restaurant,

700 S. 6th Street. 6:00pm dinner. Meeting begins 7:00pm

CENTRAL TIME

Check out our Webpage: chaptera.org

chaptera.org

[HOME](#)

[NEWSLETTERS](#)

[EVENTS](#)

[CALENDAR](#)

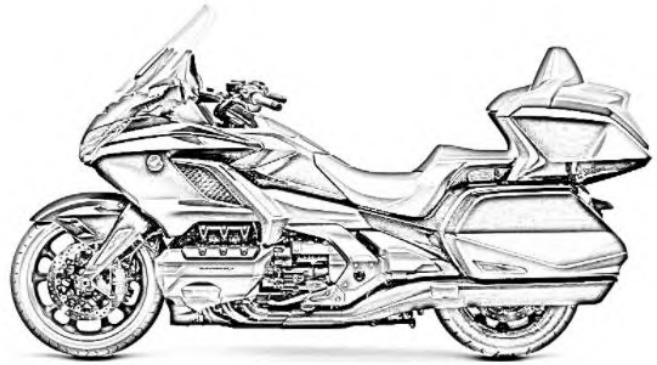
[PHOTOS](#)

[FEED](#)

[FEEDBACK](#)

[FACEBOOK](#)

[FORUM](#)



Like Us

Please join/like the GWWRA of KY Member's Page on Facebook. Here you will get last minute information, news about upcoming events and chat with fellow KY members.

You will also learn about upcoming rides.